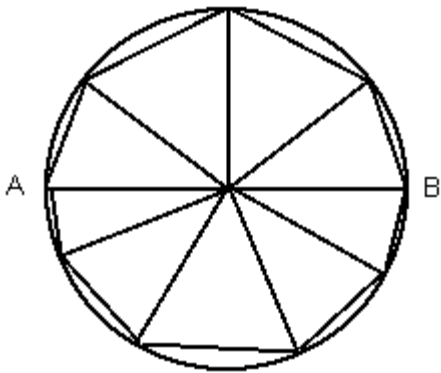


Quantative Comparison Test 3

1.

The greatest prime factor of 36	The greatest prime factor of 48
---------------------------------	---------------------------------

- A. The quantity on the left is greater
- B. The quantity on the right is greater
- C. Both are equal
- D. The relationship cannot be determined without further information



2. AB is a diameter of the circle. All triangles above the diameter in the diagram are equal in area. All triangles below the diameter are equal in area.

Total area of the triangles above AB.	Total area of the triangles below AB.
---------------------------------------	---------------------------------------

- A. The quantity on the left is greater
- B. The quantity on the right is greater
- C. Both are equal
- D. The relationship cannot be determined without further information

3. The beach resort is 2 kilometers from the city and the sports complex is 10 kilometers from the city. The city, resort and sports complex all lie at sea level.

The distance from the beach resort to the sports complex.	7 kilometers
---	--------------

- A. The quantity on the left is greater
- B. The quantity on the right is greater

- C. Both are equal
- D. The relationship cannot be determined without further information

4.

Discount in dollars on \$60 at the rate of 4 percent	Discount in dollars on \$40 at the rate of 6 percent
--	--

- A. The quantity on the left is greater
- B. The quantity on the right is greater
- C. Both are equal
- D. The relationship cannot be determined without further information

5.

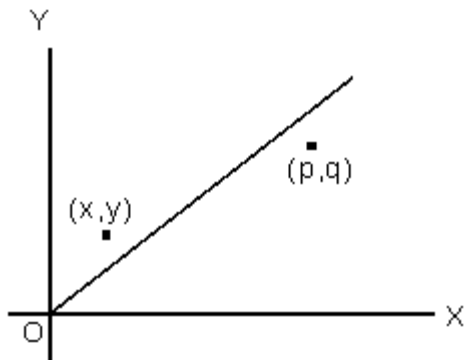
Twice an odd integer greater than 6	Three times an odd integer greater than 2
-------------------------------------	---

- A. The quantity on the left is greater
- B. The quantity on the right is greater
- C. Both are equal
- D. The relationship cannot be determined without further information

6. The rate of a certain chemical reaction doubles for every 10 degree rise in temperature.

Twice the rate at 10°	Half the rate at 30°
-----------------------	----------------------

- A. The quantity on the left is greater
- B. The quantity on the right is greater
- C. Both are equal
- D. The relationship cannot be determined without further information



7.

y/x	q/p
-------	-------

- A. The quantity on the left is greater
- B. The quantity on the right is greater
- C. Both are equal
- D. The relationship cannot be determined without further information

8. Fred is now 10 years older than George was 5 years ago

Fred's age 5 years ago	George's age now
------------------------	------------------

- A. The quantity on the left is greater
- B. The quantity on the right is greater
- C. Both are equal
- D. The relationship cannot be determined without further information

9.

$x4 / 4$	$(x / 4)4$
----------	------------

- A. The quantity on the left is greater
- B. The quantity on the right is greater
- C. Both are equal
- D. The relationship cannot be determined without further information

10.

The sum of the even numbers from 2 to 100 inclusive	52×50
---	----------------

- A. The quantity on the left is greater
- B. The quantity on the right is greater
- C. Both are equal
- D. The relationship cannot be determined without further information

Answer Key

- 1. C
- 2. B
- 3. A

4. C
5. D
6. C
7. A
8. C
9. D
10. B