



UNIVERSITY OF CAMBRIDGE INTERNATIONAL EXAMINATIONS
International General Certificate of Secondary Education

GEOGRAPHY

0460/22

Paper 2

October/November 2010

INSERT

1 hour 30 minutes

READ THESE INSTRUCTIONS FIRST

This Insert contains Photographs A and B for Question 3 and Fig. 6 for Question 4.

This document consists of **4** printed pages.



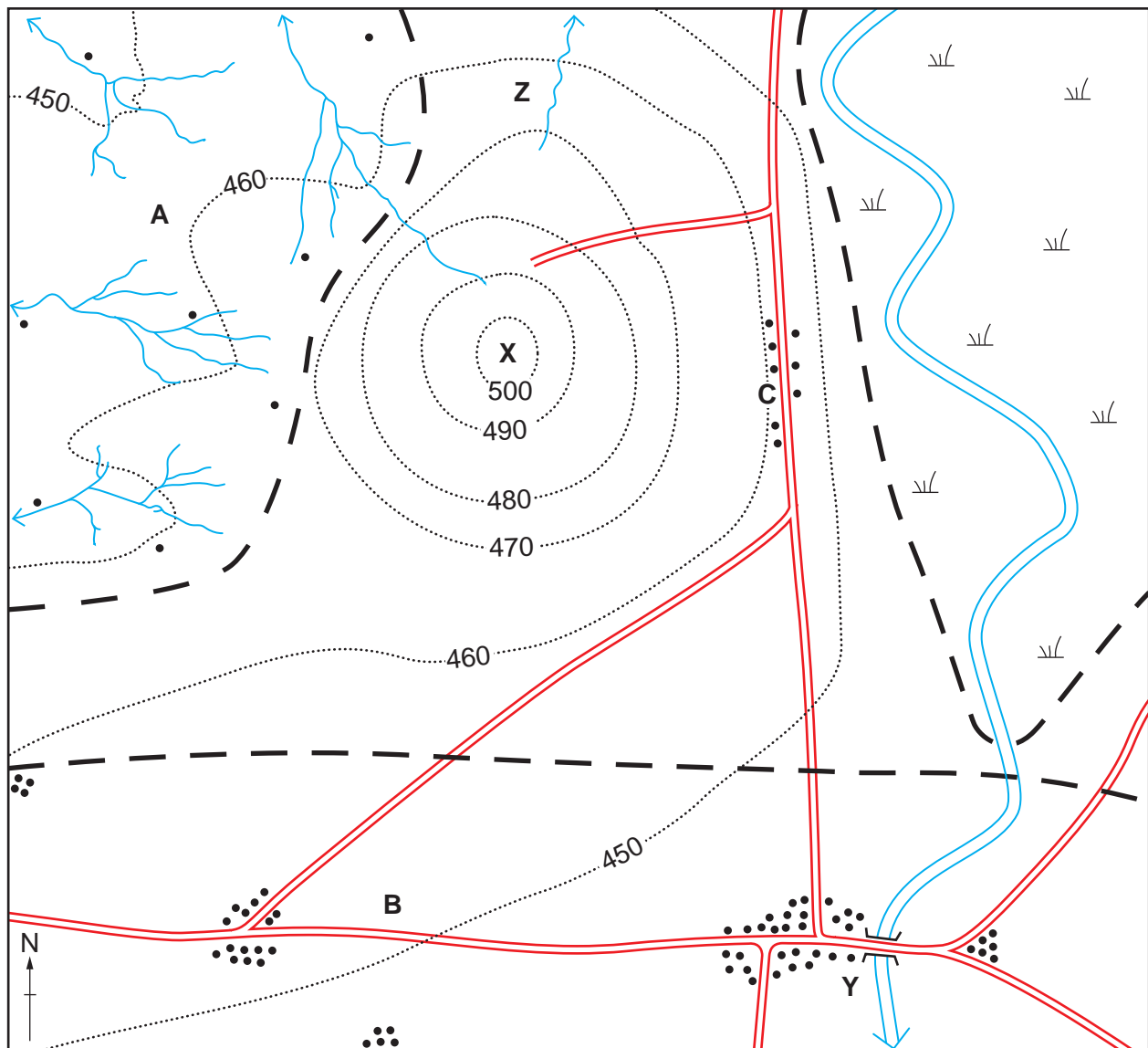
Photograph A for Question 3



Photograph B for Question 3



Fig. 6 for Question 4



- Key**
- river
 - stream
 - marsh
 - road with bridge
 - building
 - boundaries of areas A, B and marsh
 - contour with height in metres